

MODEL #: XLP5000 (Double) \* FINISHED OPENING SIZE: Width = \_\_\_\_\_ Height = \_\_\_\_\_  QUOTATION  ORDER

~~\* The Chase XLP 5000 (Double) is only Available in the following sizes.  
60" to 78" Widths (2 - 30" to 39" Panels) and 78" to 94" Heights!~~

\*Contact Factory for  
New Sizes Available!

PO# \_\_\_\_\_

**OPTIONS**

**VISION PANEL**

- CLEAR ACRYLIC
- SMOKE TINTED ACRYLIC

**JAMB GUARD**

- NO JAMB GUARD
- JAMB GUARD (9" Inch Only)

**BACK SPINE (Powder Coated Aluminum)**

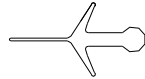
- BLACK
- GRAY

**XLP COLOR OPTIONS**  
Solid Colors

- BEIGE
- BLACK
- GRAY
- LIGHT GRAY
- RED
- BLUE

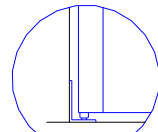
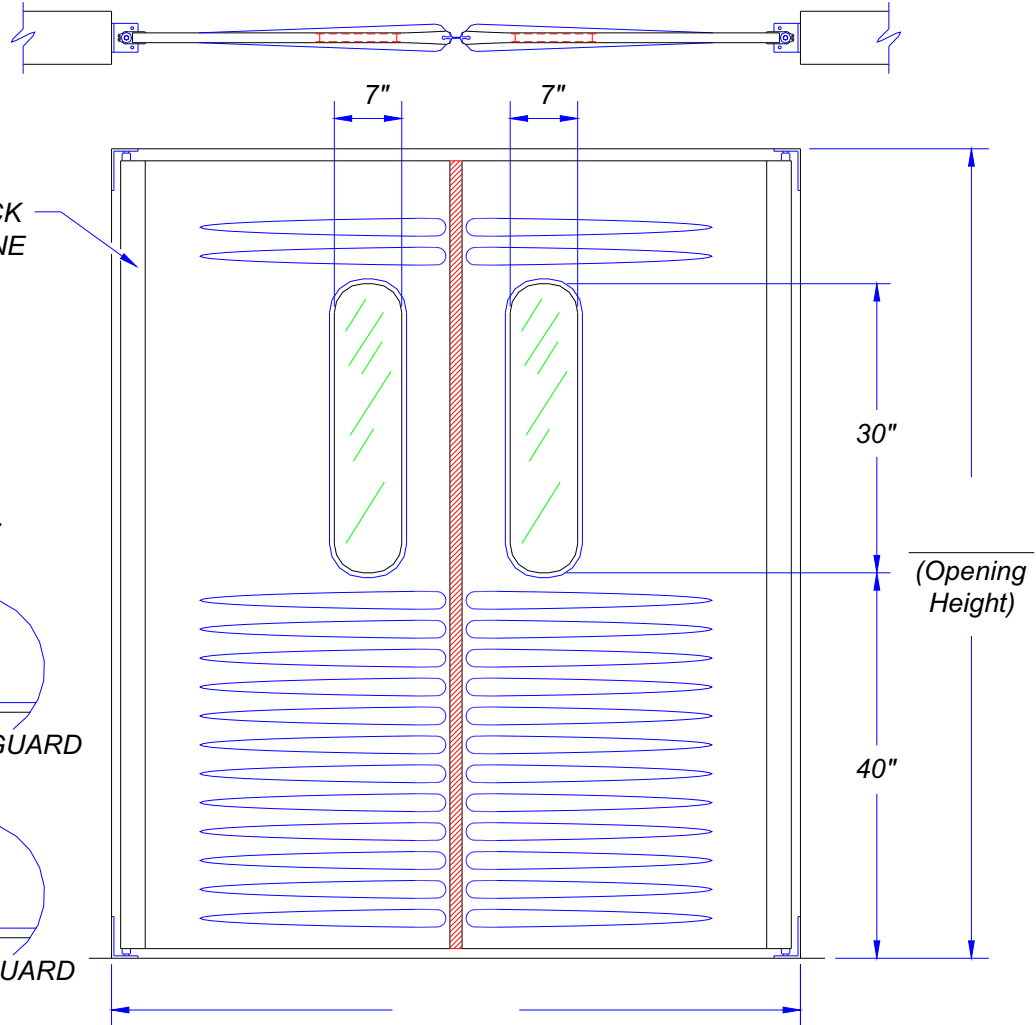
**Granite Colors**

- GRAY

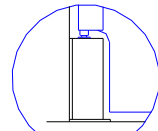


1560 Blade Gasket

THE XLP5000 DOUBLE DOORS  
COME WITH A "BLADE GASKET  
(Pt # 1560)" INSTALLED ON THE  
LEADING EDGE OF EACH PANEL.  
**THERE IS NO DEVIATION FROM  
THIS GASKET!**



NO JAMB GUARD



9" JAMB GUARD

**IMPORTANT NOTES:**

The "XLP5000" is manufactured to the dimensions of the "Finished Opening". Due to the tolerances established for Width and Height, customer must provide accurate dimensions of the opening. Please verify the dimensions you have entered!

By signing below the customer assumes all responsibility for the dimensions given and registered on this document. Production will not begin on the "XLP5000" until this document is signed, dated and returned to Chase Doors.

Approved By: \_\_\_\_\_ Date: \_\_\_\_\_

NOTES: \_\_\_\_\_

DRAWN BY	DATE
DRAWING NAME: SHOP-20.DWG	

**Chase Doors**  
World's Leading Manufacturer Of Traffic Doors  
Cincinnati Ohio, and Redmond Oregon • www.chasedoors.com  
Phone Toll Free: 1-800-543-4455 • FAX: 1-800-285-0126

**XLP5000 - DOUBLE DOOR SHOP DRAWING**

TO: \_\_\_\_\_  
JOB: \_\_\_\_\_