

QTY: _____ MODEL#: _____ FINISHED OPENING: _____

COLOR: _____

QUOTATION
 ORDER
 PO# _____

*** NOT A 200 SERIES OPTION**

- FULLY GASKETED
- * PARTIALLY GASKETED

- GASKETING** _____
- FRONT _____
 - BACK _____
 - BOTTOM _____

- SEALS**
- TOP SEAL
 - UPPER HINGE SEAL

200 SERIES REQUIREMENTS

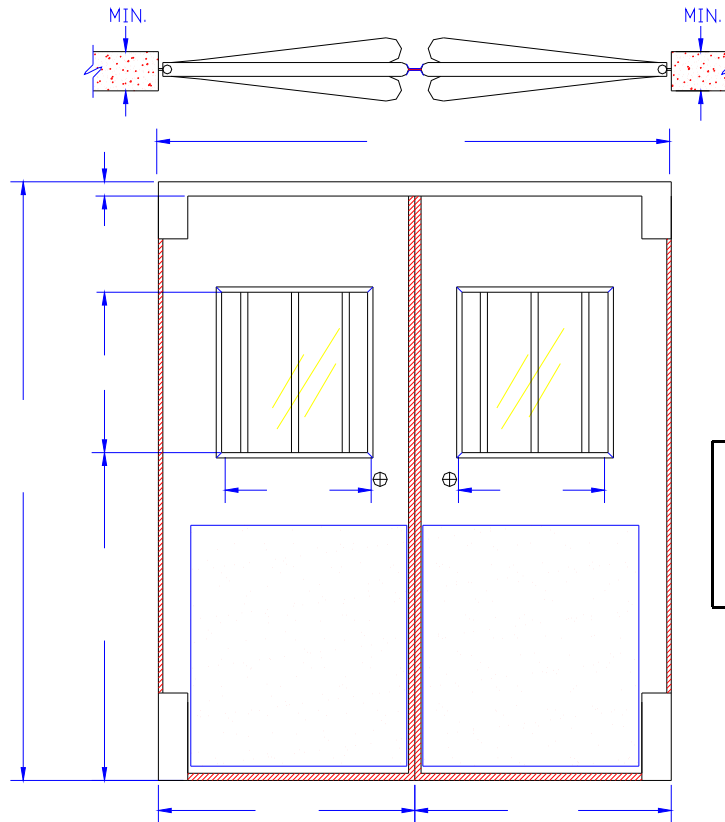
- 90° X 90° HARDWARE
- DOUBLE PANE WINDOW
- SECURITY BARS IN WINDOW
- BUMPER 38" HIGH TEARDROP COLOR _____
- KICKPLATE 38" HIGH COLOR _____
- LOWER HINGE GUARD _____ ALUM
- TOP CANEBOLTS
- BOTTOM CANEBOLTS
- 2" LOCKING DEVICE
- DIRECTIONAL SIGNS
- TAMPER PROOF FASTENERS

- * 180° X 90° HARDWARE
- * SINGLE PANE WINDOW
- NO-RISE HARDWARE
- LO-RISE HARDWARE
- WELD PLATES

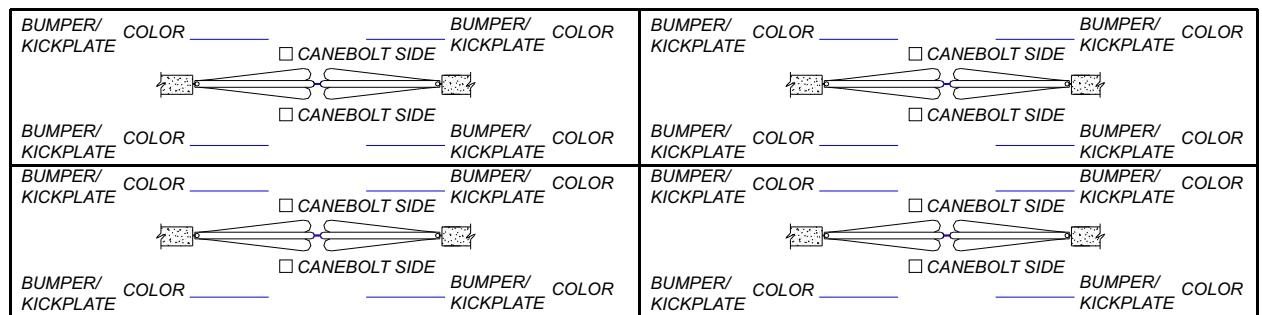
FLOW CHART: IF THIS BOX IS CHECKED OR YOU ARE USING MORE THAN ONE COLOR OF BUMPER/KICKPLATE, PLEASE FILL OUT THE ADJACENT FLOW CHART.

WRITE IN COLOR OF BUMPERS/KICKPLATES.

INDICATE WHICH SIDE OF OPENING CANEBOLTS ARE TO BE LOCATED ON BY CHECKING THE APPROPRIATE BOX.



INDUSTRIAL DOORS WITH BUMPERS, SEE ATTACHMENT FOR RECOMMENDED OR REQUIRED POST LOCATIONS.



NOTES: _____

DRAWN BY _____	DATE _____
----------------	------------

Chase Doors
 World's Leading Manufacturer Of Traffic Doors
 Cincinnati Ohio, and Redmond Oregon • www.chasedoors.com
 Phone Toll Free: 1-800-543-4455 • FAX: 1-800-978-6570

DRAWING NAME:
 SHOP-08.DWG

TO: _____

JOB: _____

DURULITE SECURITY DOOR SHOP DRAWING