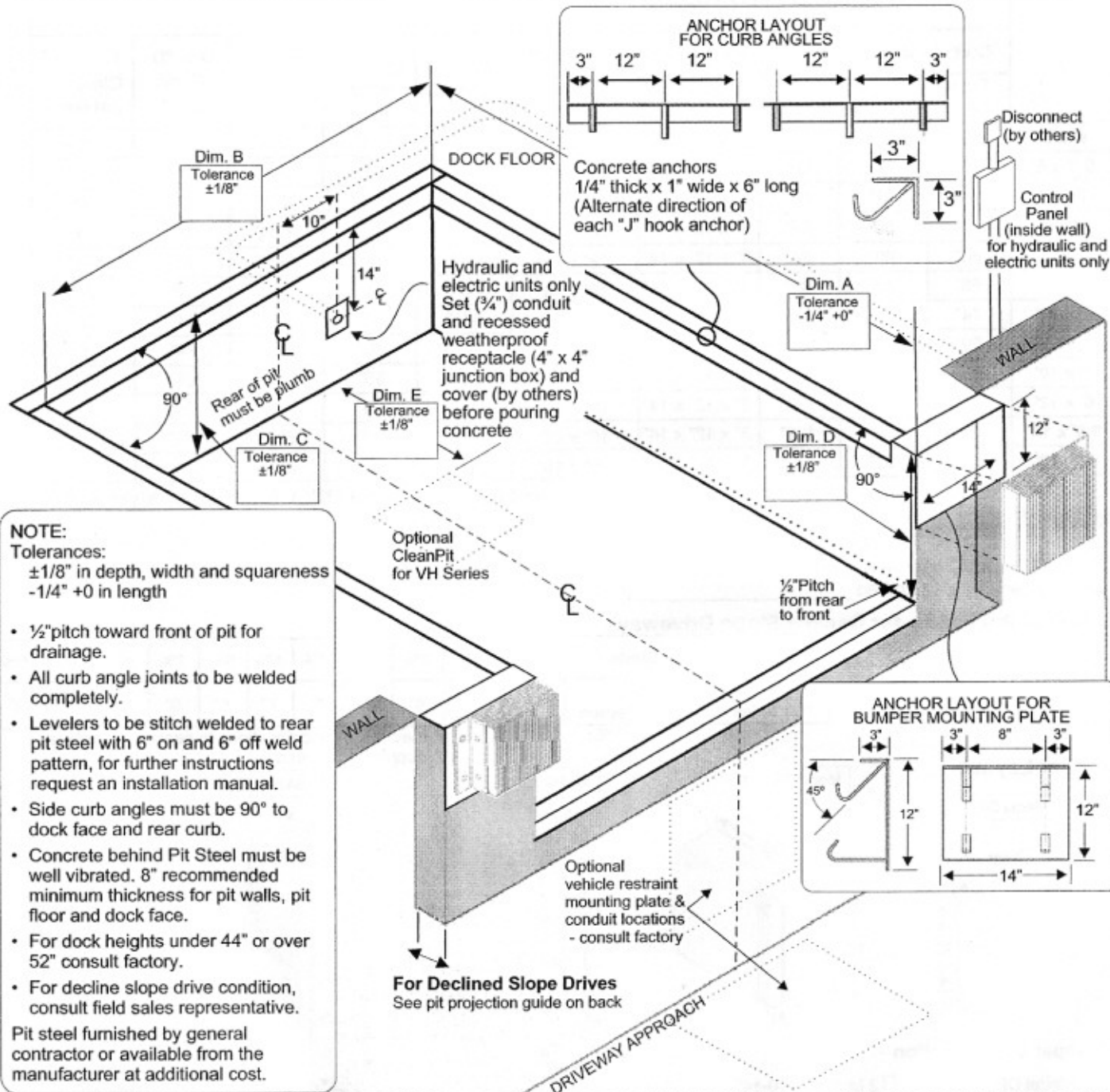


PIT DETAIL FOR CM and HM SERIES MECHANICAL & EH and VH SERIES HYDRAULIC & AP SERIES AIR POWERED DOCK LEVELERS



| | |
|-----------------------------|------------------------------------|
| Customer: _____ | Certified For Construction: |
| Job: _____ | By: _____ |
| Location: _____ | Date: _____ |
| Qty: _____ | Company: _____ |
| Model/Size: _____ | City & State: _____ |
| Capacity: _____ | Voltage/Phase: _____ |
| Represented By: _____ | Drawing #: _____ |
| Sales Representative: _____ | |

Pit dimensional tolerances are $\pm 1/8$ " in depth, width and squareness, $-1/4$ " $+0$ in length.
 POWERAMP/Systems, Inc. assume no liability for deviations beyond this tolerance.

Dimensions below are for all CM, and HM Series Mechanical and EH, and VH, Series Hydraulic and AP Series Air Powered, pit type levelers, all capacities, except 60K Comparative Industry Rating (CIR) leveler - Dim. "C" 23 1/2" Dim. "D" 24"

| | Contractors Bill Of Material | | | | | Nominal Pit Dimensions | | | | |
|------------|------------------------------|-----------------|-----------------|----------------------------|----------------------------|------------------------|-------------------|-----------------------------|------------------------------|--------------------------------------|
| | Curb Angles 1/4" x 3" x 3" | | | Mounting Plates 1/4" Thick | | Dim. "A" Length | Dim. "B" Width | Dim. "C" Depth (rear) | Dim. "D" Depth (front) | Dim. "E" Clean Pit (VH Series) |
| | Front (Qty 1) | Rear (Qty 1) | Side (Qty 2) | Bumper Plates (Qty 2) | *CleanPit Embed (Qty 1) | | | | | |
| 6' x 6' | 74" | 80" | 60" | 3" x 12" x 14" | 16" x 16" | 63" | 74" | 19 1/2" | 20" | 5" |
| 6.5' x 6' | 80" | 86" | 60" | 3" x 12" x 14" | 16" x 16" | 63" | 80" | 19 1/2" | 20" | 5" |
| 7' x 6' | 85" | 91" | 60" | 3" x 12" x 14" | 16" x 16" | 63" | 85" | 19 1/2" | 20" | 5" |
| 6' x 8' | 74" | 80" | 84" | 3" x 12" x 14" | 16" x 16" | 87" | 74" | 19 1/2" | 20" | 21" |
| 6.5' x 8' | 80" | 86" | 84" | 3" x 12" x 14" | 16" x 16" | 87" | 80" | 19 1/2" | 20" | 21" |
| 7' x 8' | 85" | 91" | 84" | 3" x 12" x 14" | 16" x 16" | 87" | 85" | 19 1/2" | 20" | 21" |
| 6' x 10' | 74" | 80" | 108" | 3" x 12" x 14" | 16" x 16" | 111" | 74" | 23 1/2" | 24" | 29" |
| 6.5' x 10' | 80" | 86" | 108" | 3" x 12" x 14" | 16" x 16" | 111" | 80" | 23 1/2" | 24" | 29" |
| 7' x 10' | 85" | 91" | 108" | 3" x 12" x 14" | 16" x 16" | 111" | 85" | 23 1/2" | 24" | 29" |
| 6' x 12' | 74" | 80" | 132" | 3" x 12" x 14" | 16" x 16" | 135" | 74" | 23 1/2" | 24" | Consult Manufacturer |
| 6.5' x 12' | 80" | 86" | 132" | 3" x 12" x 14" | 16" x 16" | 135" | 80" | 23 1/2" | 24" | |
| 7' x 12' | 85" | 91" | 132" | 3" x 12" x 14" | 16" x 16" | 135" | 85" | 23 1/2" | 24" | |

*Weldment is required ONLY for clean pit style leveler.

Optional Bumper Plates - in lieu of above

- 11" wide x 20" high (Qty 2)
- 11" wide x 24" high (Qty 2)
- Other Bumper Embed _____ (Qty 2)

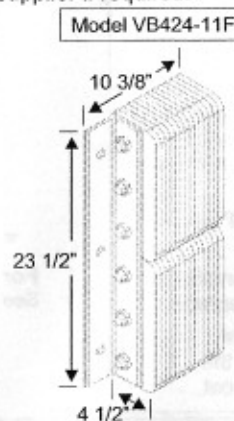
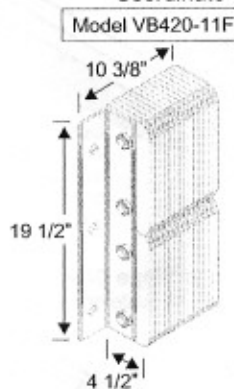
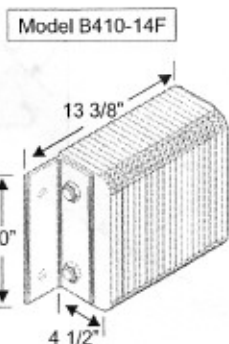
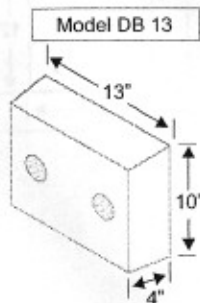
Pit Projection Guide for Decline Slope Driveways

Percentage
Of Grade = $\frac{\text{Rise of Driveway}}{\text{Driveway Length}}$

| % of Driveway Grade | 0% | 1% | 2% | 3% | 4% | 5% | 6% | 7% | 8% | 9% | 10% |
|---|----|----|----|----|----|----|----|----|-----|-----|-----|
| Pit Projection *Excludes Bumper Projection | 0" | 3" | 4" | 5" | 6" | 7" | 8" | 9" | 10" | 11" | 12" |

NOTE: Projection of pit may require modifications to seals and shelters. Coordinate with supplier if required.

Bumper Layout



Bumper Consideration

- 2 Model DB 13 Molded bumpers Standard on CM Series Levelers
- 2 Model B410-14F laminated bumpers Standard on HM (mechanical) and EH & VH (hydraulic) and AP (airpowered) Series Levelers
- 2 Model VB420-11F laminated bumpers
- 2 Model VB424-11F laminated bumpers
- Optional - 6" Projection
- Optional - Steel face
- Other Bumper: _____